

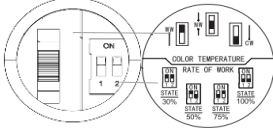


## Description

The Pandora 7 flood light is available in two sizes with wattages ranging from 75 watts to 300 watts. Pandora 7 is CCT tunable and power-adjustable allowing for application versatility. The mounting options include the slip fitter mount, u-bracket mount, and a trunnion mount.

## Key Features

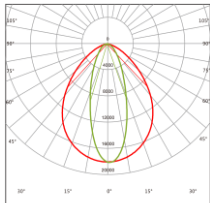
- 75W, 100W, 120W, 150W, 200W, 240W, 300W
- Adjustable CTT and Power
- 150 lm/W, IP66, IK08, CRI70/80
- 5-year warranty



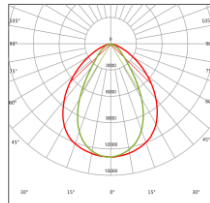
## Applications

- Parking Lots
- Exterior of buildings

## Photometry



F00402 (7Hx5V)



F00403 (7Hx6V)

## Electrical Information

<b>Model No.</b>	PD7-075	PD7-100	PD7-120	PD7-150	PD7-200	PD7-240	PD7-300
<b>Power Consumption (±5%)</b>	75W	100W	120W	150W	200W	240W	300W
<b>Power Supply</b>	SOSEN						
<b>Input Voltage</b>	AC100-277 VAC, 50 / 60 Hz						
<b>Power Factor</b>	>0.9						
<b>Driver Type</b>	Constant current (CC)						
<b>Control</b>	0-10V Dimmable, Photocell available upon request						

## Optic Information

<b>LED Type</b>	LED 2835						
<b>Efficacy (4000K RA70)</b>	150 lm/W						
<b>Luminous Flux (±10%)</b>	11,250 lm	15,000 lm	18,000 lm	22,500 lm	30,000 lm	36,000 lm	45,000 lm
<b>Correlated Color Temperature</b>	3000K, 4000K, 5000K adjustable						
<b>Color Rendering Index</b>	Ra70 (Ra80 optional)						
<b>Beam Angle (glass version)</b>	F00402 (7Hx6V), F00403 (7Hx6V)						
<b>UGR level</b>	N/A						

## Dimensions and Mounts

<b>Product Dimension</b>	8.8"×7.4"×5.6"	18.5"×7.4"×7.3"
<b>Luminaire Net Weight (±0.66 lbs.)</b>	7.48 lbs.	17.38 lbs.
<b>Export Carton Size</b>	11.8"×12"×10"	21.3"×12.2"×10"
<b>Gross Weight(±0.3kg/0.66Lbs)</b>	11 lbs.	21 lbs.
<b>Mounting Option</b>	Adjustable angle mounting	
<b>Material</b>	Aluminum alloy	
<b>Finish</b>	Akzo powder coating	
<b>Fixture Color</b>	Black (RAL9017), Bronze (R8019)	
<b>EPA</b>	0.43 ft <sup>2</sup>	0.86 ft <sup>2</sup>
<b>IK Rating</b>	IK08	
<b>IP Rating</b>	IP66	

## Lifespan and Warranty

<b>Operating Temperature</b>	-22°F to 113°F
<b>Life Time of LED @Ta=25°C</b>	40,000 hrs-L90 82,000 hrs-L80 131,000 hrs-L70
<b>Warranty</b>	5 years

## SAFETY CERTIFICATIONS

- Luminaires (UL 1598:2021 Ed.5)
- Luminaires (CSA C22.2#250.0:2021 Ed.5)

Single module



Slipfitter Mount



Trunion Mount



U-Bracket Mount

Double Module



Slipfitter Mount



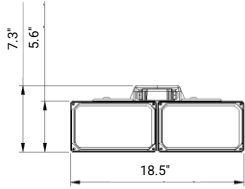
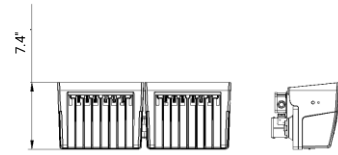
Trunion Mount



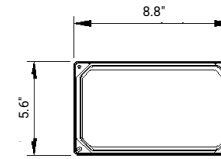
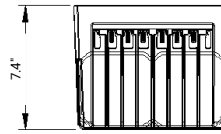
U-Bracket Mount

Dimensions

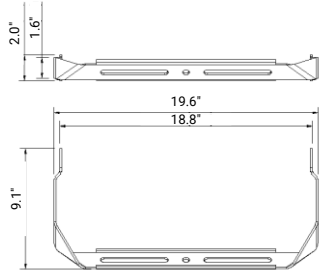
Unit: inches



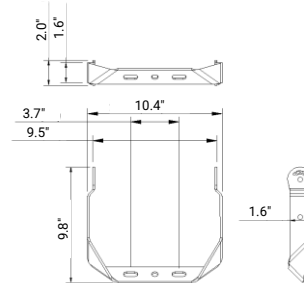
Double Module



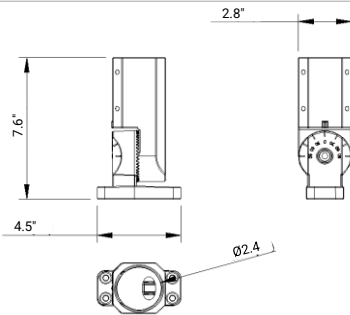
Single Module



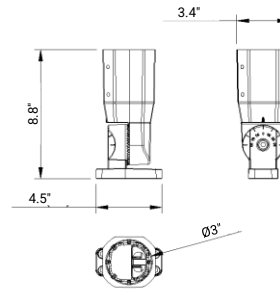
Double Module Yoke Mount



Single Module Yoke Mount



Ø60mm Slipfitter



Ø76mm Slipfitter



**NEMA socket**  
ANSI C136.41-2013 Dimming  
Receptacles, 3-pin

Code: NS-A00-02 (for 3-pin)



**Photocell control**  
ANSI C136.10-1996 Twist Lock  
for On-Off function only

Code: PS-A00-01



**Shorting cap**  
Cover NEMA socket when the  
photocell is not used

Code: NS-A00-01



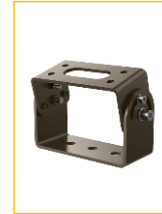
**Slipfitter**  
Adjustable angle mounting  
bracket with 60mm sleeve

Code: SP-F45-01



**Slipfitter**  
Adjustable angle mounting  
bracket with 76mm sleeve

Code: SP-F45-02



**Wall Mount**  
Can be used for wall mounting

Code: BC-F45-01



**Yoke Mount**  
For single module mounting bracket

Code: BC-F45-02



**Yoke Mount**  
For double module mounting bracket

Code: BC-F45-03