



DESCRIPTION

Full series available by 200W to 1200W, ideal to retrofit the 400W to 3000W traditional lamps. The compact modular design allows for a quick assembly and flexible installation. Easily adjustable light angle to create diversity of lighting for various environments. IC7 is the most valuable and reliable high power floodlight in the market. Widely applicable to sports fields, plazas, docking spaces, etc.

KEY FEATURES

- Modular design from 200W to 600W
- Vertical angle for easily light angle adjustment
- Multiple optics option from 10° to 15° to 30° for excellent light pollution control
- Electrophoresis and powder coating with strong anti-corrosion
- Efficiency up to 140lm/W for more energy saving
- Provided with 10KV/20KV built-in surge protection devices

APPLICATIONS

- Exhibition centers
- Parking lots
- Outdoor sports fields
- Stadiums
- Recreational sports fields (e.g., soccer fields, tennis courts, basketball courts, etc.)

Catalog Number	
Notes	
Type	

TECHNICAL SPECIFICATIONS			
Model No.	IC7-200	IC7-400	IC7-600
Power Consumption (±3%)	200W (±5%)	400W	600W
Power Supply	INVENTRONICS/SOSEN		
Input Voltage	100-277 VAC / 277-480VAC (SOSEN DRIVER ONLY), 50 / 60 Hz		
Power Factor	>0.92		
Surge Protection	6kV line-line, 10kV line-earth		
Driver Type	Constant Current (CC)		
Control	1-10V dimmable, DMX control		

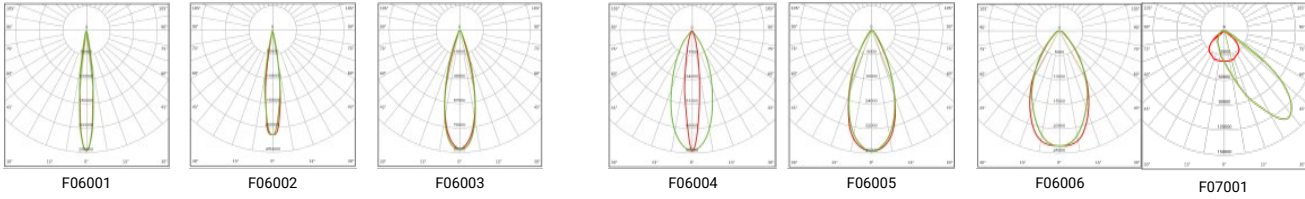
OPTIC SPECIFICATIONS			
LED Type 1	LED 5050 (for 30°, 45°, 60°)		
Luminous Flux (±10%)	28,000 lm	56,000 lm	84,000 lm
Efficacy (5000K Ra70)	140 LM/W		
Beam Angle	F06003, F06005, F06006,		
LED Type 2	LED 3737 (for 10°, 15°, 15x40°)		
Luminous Flux (±10%)	25000 lm	50000 lm	75000 lm
Efficacy (5000K Ra70)	125 LM/W		
Beam Angle	F06001, F06002, F06004		
Correlated Color Temperature	4000K, 5000K		
Color Rendering Index	Ra70 (Ra80 optional)		
UGR level	N/A		

MOUNTING AND PRODUCT DIMENSIONS			
Product Dimension	12.63"×12.44"×4.65"	16.49"×13.38"×8.74"	20.82"×13.38"×8.89"
Luminaire Net Weight	9.02±0.66 lbs.	20.68±0.66 lbs.	33.66±0.66 lbs.
Export Carton Size	14.17"×6.29"×14.76"	18.81"×10.62"×15.35"	23.54"×11.02"×15.74"
Gross Weight	10.34±0.66 lbs.	23.32±0.66 lbs.	36.96±0.66 lbs.
Mounting Option	Bracket Mounting		
Material	Aluminum Alloy Tempered Glass and Polycarbonate Optical Lens		
Finish	Powder Coating		
Fixture Color	Silver		
EPA	0.6ft²	1.34ft²	1.96ft²
IK Rating	IK08		
IP Rating	IP66		

LIFESPAN AND WARRANTY	
Operating Temperature	-22°F to 122°F
	53,000 hrs - L90
Life Time of LED @Ta=25°C	111,000 hrs - L80
	176,000 hrs - L70
Warranty	5 Years

SAFETY CERTIFICATIONS	
Luminaires (UL 1598:20221 Ed.5)	
Luminaires (CSA C22.2#250.0:2021 Ed.5)	

PHOTOMETRY

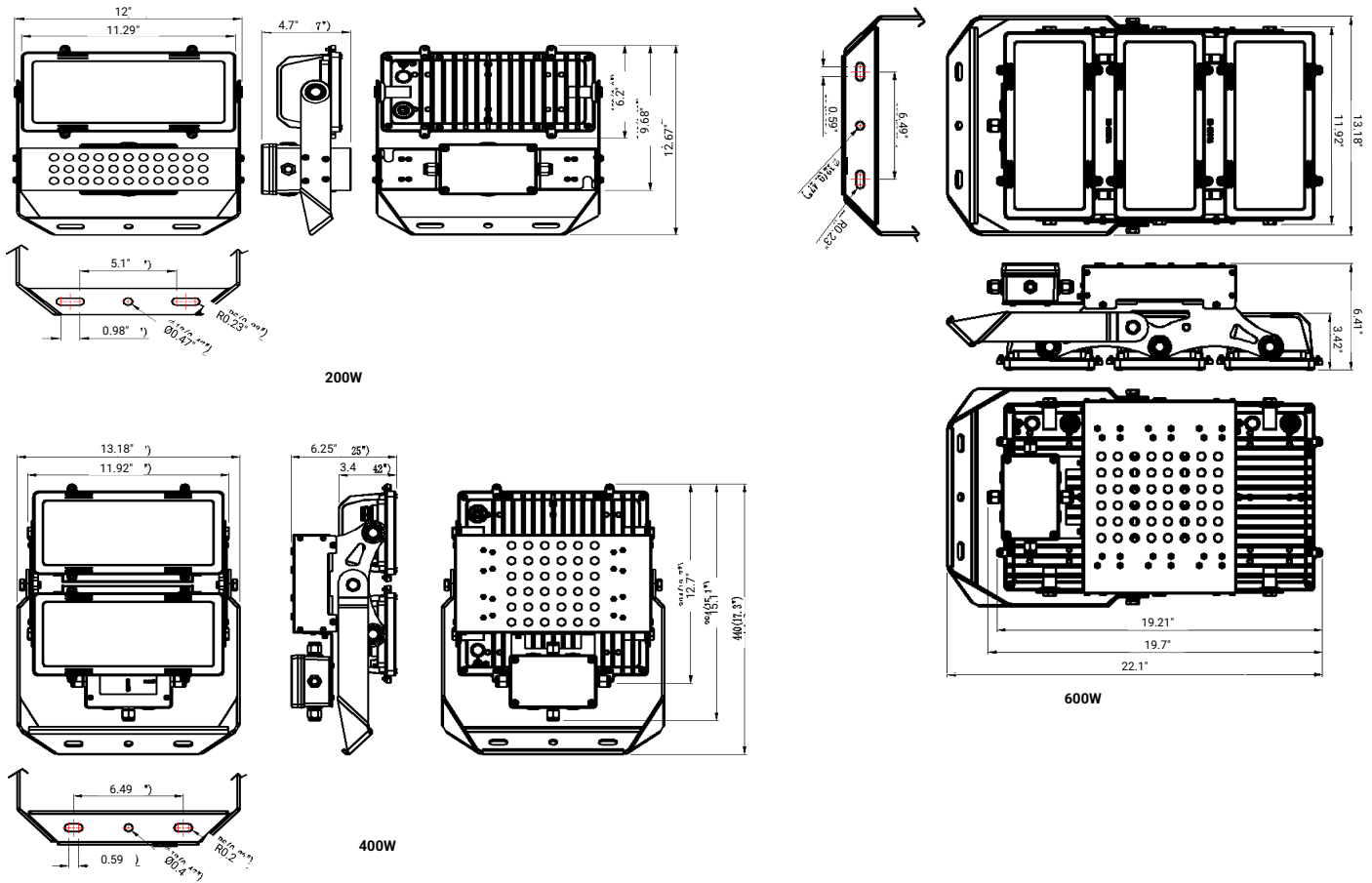


MOUNTING OPTIONS

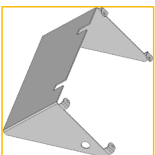
Bracket mounting



DIMENSIONS



ACCESSORIES



Shield
SPCC materials for single LED module.
Code: BC-F13-04



Safety rope
Auxiliary safety device to prevent accidents.



Adaptor mounting

ORDERING INFORMATION

Series	Wattage & Lumen Output	Voltage	Corelated Color Temperature (CCT)	Accessories	Control Options	Mount
IC7 (IC7 LED Flood Light)	200W	MV (100-277V)	40K (4000K)	BC-F13-04 (Sheild)	0-10V (Dimmable)	UB (U-Bracket Mount)
	420W	HV (200-480V)	50K (5000K)	SR (Safety Rope)		
	600W					

Finish Color	Beam Angle
SL (Silver)	F06001
	F06002
	F06003
	F06004
	F06005
	F06006
	F07001