



Catalog Number	
Notes	
Type	

TECHNICAL SPECIFICATIONS

Model No.	PD7-075	PD7-100	PD7-120	PD7-150	PD7-200	PD7-240	PD7-300
Power Consumption (±5%)	75W	100W	120W	150W	200W	240W	300W
Power Supply	SOSEN						
Input Voltage	AC100-277 VAC, 50 / 60 Hz						
Power Factor	>0.9						
Driver Type	Constant current (CC)						
Control	0-10V Dimmable, Photocell available upon request						

OPTIC SPECIFICATIONS

LED Type	LED 2835						
Efficacy (4000K RA70)	150 lm/W						
Luminous Flux (±10%)	11,250 lm	15,000 lm	18,000 lm	22,500 lm	30,000 lm	36,000 lm	45,000 lm
Correlated Color Temperature	3000K, 4000K, 5000K adjustable						
Color Rendering Index	Ra70 (Ra80 optional)						
Beam Angle (glass version)	F00402 (7H×6V), F00403 (7H×6V)						
UGR level	N/A						

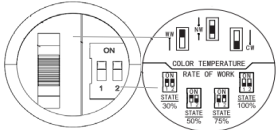


DESCRIPTION

The Pandora 7 flood light is available in two sizes with wattages ranging from 75 watts to 300 watts. Pandora 7 is CCT tunable and power-adjustable allowing for application versatility. The mounting options include the slip fitter mount, u-bracket mount, and a trunnion mount.

KEY FEATURES

- 75W, 100W, 120W, 150W, 200W, 240W, 300W
- Adjustable CTT and Power
- 150 lm/W, IP66, IK08, CRI70/80
- 5-year warranty



APPLICATION(S)

- Parking Lots
- Exterior of buildings

MOUNTING AND PRODUCT DIMENSIONS

Product Dimension	8.8"×7.4"×5.6"	18.5"×7.4"×7.3"
Luminaire Net Weight (±0.66 lbs.)	7.48 lbs.	17.38 lbs.
Export Carton Size	11.8"×12"×10"	21.3"×12.2"×10"
Gross Weight(±0.3kg/0.66Lbs)	11 lbs.	21 lbs.
Mounting Option	Adjustable angle mounting	
Material	Aluminum alloy	
Finish	Akzo powder coating	
Fixture Color	Black (RAL9017), Bronze (R8019)	
EPA	0.43 ft²	0.86 ft²
IK Rating	IK08	
IP Rating	IP66	

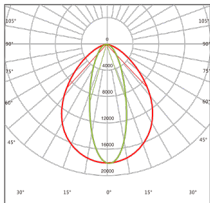
LIFESPAN AND WARRANTY

Operating Temperature	-22°F to 113°F
Life Time of LED @Ta=25°C	40,000 hrs-L90
	82,000 hrs-L80
	131,000 hrs-L70
Warranty	5 years

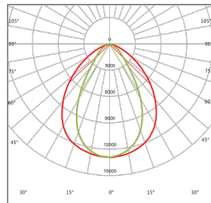
SAFETY CERTIFICATIONS

- Luminaires (UL 1598:2021 Ed.5)
- Luminaires (CSA C22.2#250.0:2021 Ed.5)

PHOTOMETRY



F00402 (7H×5V)



F00403 (7H×6V)

MOUNTING OPTIONS

Adjustable mounting (slipfitter mounting, wall mounting, yoke mounting)

Single module



Slipfitter Mount



Trunion Mount



U-Bracket Mount

Double Module



Slipfitter Mount



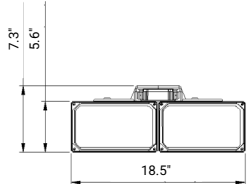
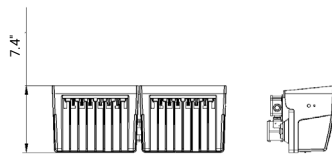
Trunion Mount



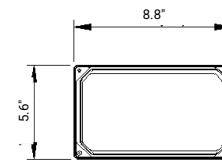
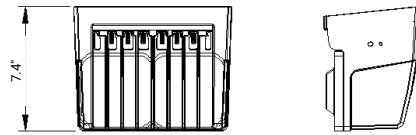
U-Bracket Mount

DIMENSIONS

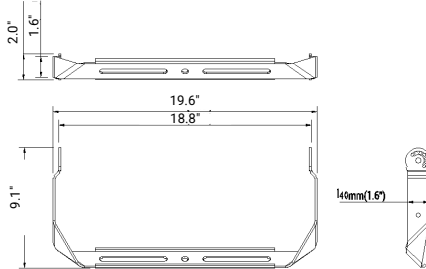
Unit: inches



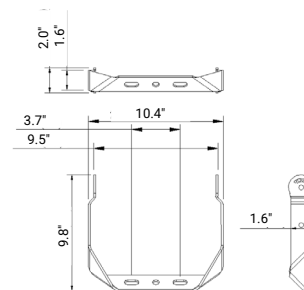
Double Module



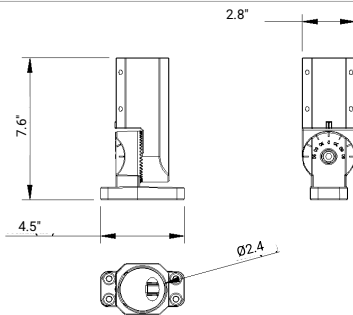
Single Module



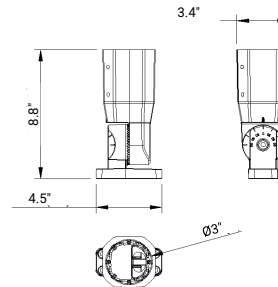
Double Module Yoke Mount



Single Module Yoke Mount



Ø60mm Slipfitter



Ø76mm Slipfitter

ACCESSORIES



NEMA socket
ANSI C136.41-2013 Dimming Receptacles, 3-pin

Code: NS-A00-02 (for 3-pin)



Photocell control
ANSI C136.10-1996 Twist Lock for On-Off function only

Code: PS-A00-01



Shorting cap
Cover NEMA socket when the photocell is not used

Code: NS-A00-01



Slipfitter
Adjustable angle mounting bracket with 60mm sleeve

Code: SP-F45-01



Slipfitter
Adjustable angle mounting bracket with 76mm sleeve

Code: SP-F45-02



Wall Mount
Can be used for wall mounting

Code: BC-F45-01



Yoke Mount
For single module mounting bracket

Code: BC-F45-02



Yoke Mount
For double module mounting bracket

Code: BC-F45-03

ORDERING INFORMATION

Series	Wattage & Lumen Output	Voltage	Correlated Color Temperature (CCT)	Beam Angle
PD7 (Pandora 7 LED Flood Light)	75W (11,250lm)	MV (100-277V)	30K (3000K) 40K (4000K) 50K (5000K)	F00402 (7H×5V)
	100W (15,000lm)			F00403 (7H×6V)
	120W (18,000lm)			
	150W (22,500lm)			
	200W (30,000lm)			
	240W (36,000lm)			
	300W (45,000lm)			

Mounting Option	Finish Color	Control Options	Accessories
SF (Slipfitter Mount)	BK (Black, RAL9017)	0-10V (0-10V Dimmable)	WM (Wall Mount)
UB (U-Bracket Mount)	BZ (Bronze, RAL8019)	PC (Photocell)	SP60 (Slipfitter 60mm)
TR (Trunnion Mount)			SP76 (Slipfitter 76mm)
			YM1 (Yoke Mount Single)
			YM2 (Yoke Mount Double)
			NS3 (NEMA Socket 3-Pin)
			SC (Shorting Cap)