



Catalog Number	
Notes	
Type	

TECHNICAL SPECIFICATIONS					
Model No.	SK7-100	SK7-120	SK7-150	SK7-200	SK7-240
Power Consumption(±10%)	100/80/60W (Selectable)	120/100/80/60W (Selectable)	150/120/100/80W (Selectable)	200/150/120/100W (Selectable)	240/200/175/150W (Selectable)
Power Supply	LIFUD				
Input Voltage	100-277 VAC 50 / 60 Hz				
Power Factor	>0.93				
Surge Protection	4kV line-line,6kV line-earth				
Driver Type	Constant Current (CC)				
Control	Dimmable Microwave Motion Sensor				

OPTIC SPECIFICATIONS					
LED Type	LED 2835				
Luminous Flux (±10%)	20000lm	24000lm	30000lm	40000lm	45600lm
Efficacy (5000K Ra70)	200 LM/W				190 LM/W
Correlated Color Temperature	5000K (4000K optional)				
Color Rendering Index	Ra70				
Beam Angle	H00108/H00111/H00115/H00121				
UGR level	<25				



## DESCRIPTION

The Sky X7 LED High Bay is a high-performance lighting solution engineered for industrial and commercial applications requiring energy efficiency and powerful illumination. Designed to deliver up to 45600 lumens with selectable wattages, the Sky X7 ensures optimal brightness levels while maximizing energy savings. Its advanced optics provide multiple beam angle options, offering precise light distribution for warehouses, airports, and manufacturing facilities.

## APPLICATION(S)

- Industrial Facilities
- Airports

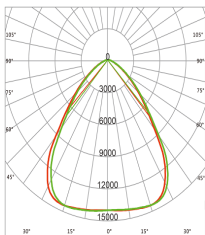
## MOUNTING AND PRODUCT DIMENSIONS

Product Dimension	ø14.17" x 7.32"	
Luminaire Net Weight	8.6±0.66 Lbs	9.47±0.66 Lbs
Export Carton Size	16.85" x 16.85" x 8.86"	
Gross Weight	11.68±0.66 Lbs	12.57±0.66 Lbs
Mounting Option	Hook Mount	Pendant Mount
	U-Bracket Mounting	
Material	Aluminum Alloy	
	Polycarbonate Optical Lens	
Finish	Powder Coating	
Fixture Color	Black	
EPA	NA	
IK Rating	IK08	
IP Rating	IP65	

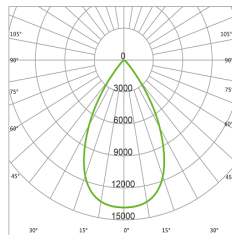
## LIFESPAN AND WARRANTY

Operating Temperature	Normal: -22°F to 122°F
	Motion sensor: 32°F to 122°F
Life Time of LED @Ta=25°C	40000hrs-L90
	84000hrs-L80
	134000hrs-L70
Warranty	5 Years

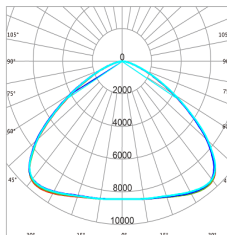
## PHOTOMETRY



H00108  
(90° circular Lens)



H00111  
(60° circular Lens)

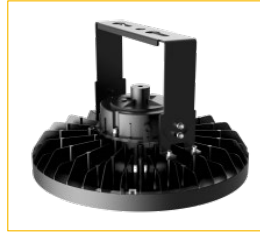


H00115  
(120° circular Lens)

**Mounting Options**



Hook Mounting

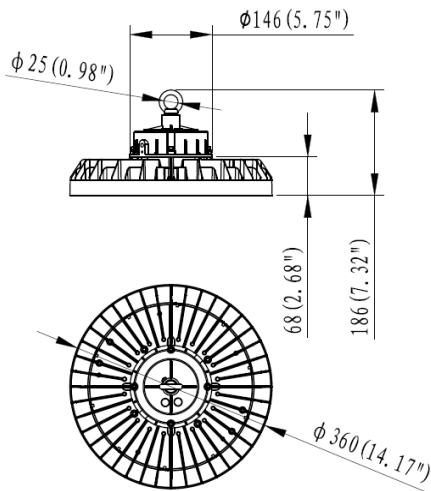


U-Bracket Mounting

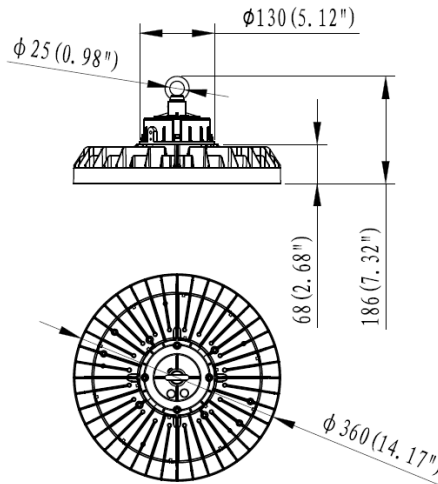


Pendant Mounting

**DIMENSIONS (unit:mm)**



200W / 240W



100W / 120W / 150W

**ACCESSORIES**



**Optic lens**  
High transmittance PC materials, UV test approval.  
**Photometry** for different beam angle.



**Aluminium reflectors**  
Different beam angle, anti glare effect, black/silvery color options.



**PC reflector**  
90° PC reflector with lid.



**Non adjustable bracket**  
SPCC materials with outdoor powder coating, Non adjustable.



**±60° adjustable bracket**  
SPCC materials with outdoor powder coating.



**Pipe mount bracket**  
support 3/4 NPT.



**Plug-and-play microwave sensor**  
1 pcs for each luminaire.



**Safety chain**  
304 stainless steel, available for 0.25m, 1m, 1.5m and 5m long.

## ORDERING INFORMATION

Series	Wattage & Lumen Output	Voltage	Correlated Color Temperature (CCT)	Beam Angle	Control Options	Mounting Option
SK7						
SK7 (Sky X7 LED High Bay)	<b>100W</b> (Selectable: 100/80/60W, 20000lm)	<b>MV</b> (100-277V)	<b>40K</b> (4000K)	<b>H00108</b> (90° Circular Lens)	<b>D</b> (Dimmable)	<b>HM</b> (Hook Mount)
	<b>120W</b> (Selectable: 120/100/80/60W, 24000lm)		<b>50K</b> (5000K)	<b>H00111</b> (60° Circular Lens)		<b>UB</b> (U-Bracket Mount)
	<b>150W</b> (Selectable: 150/120/100/80W, 30000lm)		<b>H00115</b> (120° Circular Lens)	<b>PM</b> (Pendant Mount)		
	<b>200W</b> (Selectable: 200/150/120/100W, 40000lm)		<b>H00121</b> (Special Optic)			
	<b>240W</b> (Selectable: 240/200/175/150W, 45600lm)					
Finish Color	Accessories					
<b>BK</b> (Black)	<b>OL</b> (Optic Lens - High Transmittance PC) <b>AR</b> (Aluminum Reflector - Black/Silver) <b>PR</b> (PC Reflector 90° with Lid) <b>SC</b> (Safety Chain 0.25m/1m/1.5m/5m)	<b>PB</b> (Pipe Mount Bracket for 3/4 NPT) <b>AB</b> (Adjustable Bracket ±60°)				